



TOKYO
Teshigoto

MAISON & OBJET

4-8 September 2025
Paris, France

東京手仕事

メゾン・エ・オブジェ
令和七年 フランス、パリ



What is Tokyo Teshigoto?

Tokyo Teshigoto (Hand-Crafts) is an initiative that seeks not only to develop new traditional craft products that meet the needs of today's consumers, but also to promote them both within Japan and to audiences around the world.

Rooted in the masterful skills and spirited dedication of Edo-era artisans, Tokyo's traditional crafts have been cherished for generations. With their exceptional functionality and enduring charm, they continue to be passed down to this day.

Through this project, we propose a rich, modern lifestyle in which time-honoured techniques are seamlessly integrated with contemporary sensibilities
- fostering new appreciation for artisanal craft.

The Traditional Crafts of Tokyo

Tokyo's traditional crafts have been nurtured over many generations, shaped by the city's unique climate, culture, and history. They are created using time-honoured techniques and methods passed down through the ages.

In contrast to uniform, mass-produced goods, traditional crafts—handmade and imbued with warmth—offer both familiarity and exceptional functionality, bringing richness and depth to everyday life.

As industries deeply rooted in local communities, these crafts also support regional economic development and play a vital role in preserving local cultural heritage.

At present, 42 craft categories are officially designated as Traditional Crafts of Tokyo.

Contact

maison_teshigoto@jtb.com

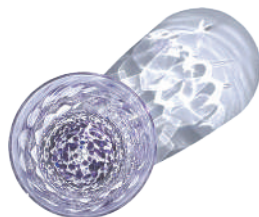


Contents

GLASS-LAB Co. Ltd.	1
Nakakin Glass Inc.	2
Shimizu Glass Corp.	3
Ryukobo Co., Ltd.	4
Okahan Corp.	5
Koujin Co., Ltd.	6
Takahashi Kobo Co., Ltd.	7
Kakinuma Ningyo Co.,Ltd.	8
Sangenshi Kikuoka	9
Miyakawa Hake-Brush Manufacturing Co.,Ltd.	10
Kamiyama Hyougu Inc.	11
Ichihara Co.,Ltd.	12
Mont Blanc Co.,Ltd.	13
Uno Hake Brush Manufacturing Co.,Ltd.	14
Tomita Dye Craft Co.,Ltd.	15
Kadowaki Glass	16
Textile Dyeing Ochiai	17
Tokyo Wazarashi Co.Ltd	18
Dyeing Studio Takatori	19
Sawai Textile	20
Fujiya Dyeing Studio	21
Popup Store in Paris - Maison Wa	24

TOGIDASHI

とぎだし -TOGIDASHI- 江戸紫



Edo Kiriko (Cut Glassware)

Polished glass for special occasions

The surface of this glass is precisely polished by a flat-cutting (hirakiri) artisan, creating intricate internal reflections, while sandblasting techniques bring out a bold, contemporary design.

Crafted using recycled cullet and offcuts, the piece is brought to life through a combination of flat polishing and sandblasting — producing a radiant vessel where light refracts and reflects in delicate interplay.

Available in traditional Edo purple, this is a special glass made for special days — ideal as a sake vessel or a refined celebratory gift.



Product Details

TOGIDASHI Edo Purple Glass
Diameter 73 × Height 80 mm /
Soda Glass, Recycled Cullet

Production company details

GLASS-LAB Co. Ltd.

GLASS-LAB株式会社



GLASS-LAB is a specialist glass studio that traces its roots to Shiina Glass Works, founded in 1950 by Mitsuo Shiina, grandfather of the current owner.

At the heart of Shiina Kiriko (GLASS-LAB) is a spirit of co-creation: crafting heartfelt glassworks in collaboration with the gift-giver, with the hope of deeply moving the recipient.

Address: 1-13-11 Hirano, Koto-ku, Tokyo, 135-0023, Japan

Tel: +81 (0)3 6318 9407

Website: <https://glass-labo.com/>

Email: glasslab417@gmail.com

Masu Glass Suikakusai

枡ガラス 翠角彩



Edo Glassware (Glassware)

Cherry blossoms swirl in a glass masu — a graceful moment enjoyed in “Sui” emerald green

This masu-shaped glass is crafted using traditional Edo glassblowing techniques and cloaked in Sui-iro — a unique green hue born from upcycled glass offcuts.

In the production of glassware, glass scraps are an inevitable byproduct. Although it was long believed that glass scraps layered with colour could not be recycled, this assumption was challenged through repeated experimentation and refinement. The result is Sui-iro — a singular hue formed from the blending of various coloured fragments — fusing the elegance of traditional Japanese aesthetics with a modern commitment to sustainability.



Product Details

Masu Glass Suikakusai

Light Green, Dark Green
/ 75 × 75 × 50 mm / Soda Glass

Mini Masu Glass Suikakusai

Light Green, Dark Green
/ 48 × 48 × 35 mm / Soda Glass

Production company details

Nakakin Glass Inc.

中金硝子総合株式会社



Nakakin Glass, founded in 1946, is a Tokyo-based workshop renowned for its production of Nakakin Irokise Glass—a distinctive technique involving the overlaying and blowing of two different colours of glass. Through this unique craft, Nakakin has played a key role in promoting Edo Kiriko, the traditional cut glass of Tokyo.

Rather than focusing solely on ornamental pieces, Nakakin is committed to creating glassware intended for daily use—items designed to remain appealing over time. In recent years, the studio has also dedicated itself to developing new products that merge traditional techniques with contemporary design sensibilities.

Address: 2-11-29 Hirai, Edogawa-ku, Tokyo, 132-0035, Japan

Tel: +81 (0)3 3684 4611

Website: <https://nakakinglass.com/wordpress/language/en/>

Email: info@nakakinglass.com

AWAKO COLLECTION

アワココレクション

Edo Kiriko (Cut Glassware)

A new form of Edo Kiriko that embraces the charm of bubble textured glass

To celebrate its 100th anniversary, Shimizu Glass created this piece by drawing on a century of expertise in Edo Kiriko cut glass techniques. Using glass with air bubbles — traditionally seen as imperfections unfit for fine glassware — those bubbles are now embraced as part of the design aesthetic, thoughtfully integrated into the cut patterns to enhance their visual appeal and uniqueness.

The name “AWAKO” is a playful nod to the Japanese words for “bubbles” (awa) and “here” (koko) — inviting you to pick it up, turn it in your hands, and enjoy the small surprise of discovering where each bubble resides. This innovative creation reimagines the beauty of Edo Kiriko, offering a fresh perspective on a timeless craft.



Product Details

From left
AWA-WA
 Indigo blue, bronze red, clear

AWA-KIRA
 Indigo blue, bronze red, clear

AWA-KOKO
 Indigo blue, bronze red, clear
 (Diameter 80 × Height 125 mm,
 380 ml)

Production company details

Shimizu Glass Corp.

株式会社清水硝子



Founded in 1923, Shimizu Glass is one of the longest-standing Edo Kiriko studios still in operation. Its artisans continue to uphold the techniques and spirit of the founder, Naojiro Shimizu, to this day. The studio brings together a diverse group of craftspeople—from master artisans with over 50 years of experience to younger makers with a modern sensibility—each contributing to the ongoing evolution of Edo Kiriko.

Address: 4-64-7 Horikiri, Katsushika-ku, Tokyo, 124-0006, Japan
Tel: +81 (0)3 3690 1205
Website: <https://shimizuglass.com/>
Email: info@shimizuglass.com

SHORYU

昇龍



Tokyo Kumihimo (Braided Cords)

The exquisite texture of kumihimo braided cords — In the palm of your hands

This ballpoint pen is crafted by a venerable kumihimo workshop in Nihonbashi, Tokyo — a studio with over 130 years of history, drawing on generations of traditional braiding techniques.

The grip features the classic Naikikumi braid, where fibers are woven diagonally to create a uniquely tactile surface and an exceptionally comfortable fit in the hand — unlike anything you've held before.

To complete the piece, the metal parts are finished by Koji Orii, a renowned craftsman of Takaoka copperware, using traditional Japanese patination techniques, adding an elegant and refined touch to the piece.



Product Details

SHORYU Black, Blue
 Height 15.5cm / Ballpoint pen
 handle: 100% silk
 Base: aluminium, brass

Production company details

Ryukobo Co., Ltd.

株式会社龍工房



With each strand of braided cord and every obiage (kimono sash scarf), Ryukobo weaves limitless creativity into its work. It is one of the few ateliers that handles the entire process in-house—from dyeing silk threads to designing and braiding.

Founded over 130 years ago, Ryukobo continues to create exquisite objime and obiage that enhance the elegance of kimono dress, while also expanding the possibilities of Japanese tradition through bold, contemporary applications.

Address: 4-11 Nihonbashi-Tomizawacho, Chuo-ku, Tokyo, 103-0006, Japan

Tel: +81 (0)3 3664 2031

Website: <https://ryukobo.jp/>

Email: ryukobo@silver.ocn.ne.jp

Hakonomatsu

箱ノ松 大



Other

Takasago no Matsu — A symbol of auspicious blessings, reimagined for the modern home

Takasago dolls have long been cherished and gifted to celebrate special occasions. Hakono Matsu is a distinctive Edo-style doll bonsai that elevates the traditionally supporting Takasago pine tree to the starring role. When you open the paulownia box, a meticulously crafted pine tree, created by master artisans, is revealed—unfolding a unique world of handcrafted floral art that has accompanied traditional dolls for generations. These pieces bring a sense of comfort and the refined beauty of Japanese aesthetics into daily life, adding a touch of elegance to modern spaces as a contemporary interpretation of the Takasago doll.



Product Details

Edo-style doll bonsai "Hakonomatsu" Large

Evergreen pine, snow pine,
cherry pine, 304 × 124 × height
182 mm / paper, rayon, dye,
others

Edo Doll Bonsai "Hakonomatsu" Small

Evergreen Pine, Snow Pine,
Cherry Pine, 166 × 124 × Height
182 mm / Paper, Rayon, Dye,
Others

Production company details

Okahan Corp.

有限会社岡半

Be Subtle, Yet Exquisite

With a history spanning over a century, Okahan has long embraced the philosophy of "quiet quality." Originally crafted to serve as understated accents enhancing traditional Japanese interiors, their Takasago artificial flowers are meticulously handmade by skilled artisans, each piece infused with beauty and refinement. Every detail is executed with care, showcasing the polished techniques of true traditional craftsmanship.

Address: 3-2-8 Daitakubo, Midori-ku, Saitama-shi, Saitama, 336-0936, Japan

Tel: +81 (0)48 882 8294

Website: <http://www.okahan-zouka.jp>

Email: okahan@mub.biglobe.ne.jp



TAKARAYOROI

宝甲



Other

Display. Store.

Samurai armour-inspired interior storage to enrich your life

This striking storage piece draws inspiration from odoshi — the decorative lacing found on suits of armour from the Heian and Kamakura periods — reinterpreted here as a contemporary expression of samurai aesthetics. The drawer handles feature the kikuza, traditional metal fittings with a chrysanthemum design also found on samurai armour. This creation seamlessly blends the elegance of craftsmanship, the beauty of interior design, and the practicality of everyday use — made possible by the expert techniques of skilled artisans. The vivid braiding adorning the drawer front features traditional colour pairings, chosen to reflect auspicious wishes for “harmony” and “family well-being.”



Product Details

TAKARAYOROI Tsumadori
2 × 2 tiers / 160 × 160 × Height
160mm / Silk, Rayon, Aluminium,
Paulownia

TAKARAYOROI Tasogare
3 × 3 tiers / 232 × 160 × Height
232mm / Silk, Rayon, Aluminium,
Paulownia

Production company details

Koujin Co., Ltd.

株式会社甲人

Founded in 1897, Kojin has been in operation for over 120 years. Its female armour artisan (katchūshi) blends the precision of traditional armoury techniques with a refined, expressive design sensibility. Her richly imaginative and highly original suits of armour and helmets transcend seasonal festival ornaments, earning recognition as rare artistic embodiments of history itself.

Address: 5-48-14 Mukojima, Sumida-ku, Tokyo, 131-0033, Japan
Tel: +81 (0)3 3611 2317
Website: <https://www.yoroi-koujin.com/>
Email: 4618katsuyo@gmail.com



TOKYO RIMPA FORTUNE FUJI

東京琳派 縁起富士



Edo Moku-Hanga (Woodblock Prints)

Modern Mount Fuji reimagined through traditional Edo techniques

This set of five woodblock prints captures the ever-changing beauty of Mount Fuji across the seasons, depicted through a modern design inspired by the legacy of the Rinpa school, a style known for its elegance. Traditional Edo woodblock prints are the result of a collaborative process divided among specialist painters (eshi), carvers (horishi), and printers (surishi). In this collection, the designer's vision is brought to life by the master printer.

Each print comes with a custom frame, letting you rotate the artwork with the seasons — or simply to match your mood — bringing the refined elegance of Edo woodblock art into your everyday life.



Product Details

**Edo Woodblock Print TOKYO
RIMPA FORTUNE FUJI**

Woodblock print: 168 × 230 mm,
Frame: 274 × 212 × 7 mm / Paper

Production company details

Takahashi Kobo Co., Ltd.

株式会社高橋工房



With over 160 years of history, Takahashi Kobo is the oldest surviving ukiyo-e woodblock print studio. Descended from a long line of surishi (master printers), the Takahashi family now also takes on the role of the designer and overseer of the printmaking process. Using the same materials and techniques as those employed during the Edo period, the studio not only revives traditional woodblock prints but also actively collaborates with various contemporary art forms—bridging time-honoured craft with modern creative expression.

Address: 2-4-19 Suido, Bunkyo-ku, Tokyo, 112-0005, Japan

Tel: +81 (0)3 3814 2801

Website: <https://takahashi-kobo.com/english/>

Email: takahashi-kobo@mx9.ttcn.ne.jp

Kimekomi Kagura

木目込神楽



Edo Kimekomi Ningyo (Wood and Cloth Dolls)

Kimekomi Masks — Colouring your life with joy

A beautiful and contemporary mask, crafted using the traditional techniques of Edo Kimekomi doll-making — a centuries-old art form born in Edo (modern-day Tokyo). Masks have long served as symbols of belief, protection, and good fortune, not just in Japan but across the world, and they continue to play an important role in the rituals and folklore of many cultures.

In addition to classic designs, this collection embraces diversity with unique variations such as the Black Fox, Red Hannya, and Brown Otafuku. Each mask form is created using 3D printing, resulting in a rare fusion of traditional Japanese craftsmanship and contemporary technology. This is a one-of-a-kind piece, infused with the master craftsmen's heartfelt wish to bring happiness and good fortune to its owner.



Product Details

Kimekomi Kagura

Fox mask

162 × 184 × 90mm

Otafuku mask

166 × 173 × 57mm

Hannya Mask

153 × 180 × 60mm

/ Weight approx. 120g

Backboard

230 × 280 × 7mm

/ Weight approx. 380g

Production company details

Kakinuma Ningyo Co.,Ltd.

株式会社柿沼人形



Edo Kimekomi dolls are a traditional craft passed down alongside the development of Edo (Tokyo). Each piece is meticulously handcrafted by artisans to bring lasting beauty and cultural charm to any setting. While ensuring that each doll becomes a treasured heirloom to be proudly displayed for generations, the artisans also devote themselves to blending tradition with innovation.

Address: 1-21-11 Shin-Koshigaya, Koshigaya-shi, Saitama, 343-0857, Japan

Tel: +81 (0)48 964 7877

Website: <https://www.kakinuma-ningyo.com/en/>

Email: toshi@kakinuma-ningyo.com

Tenjin Chime

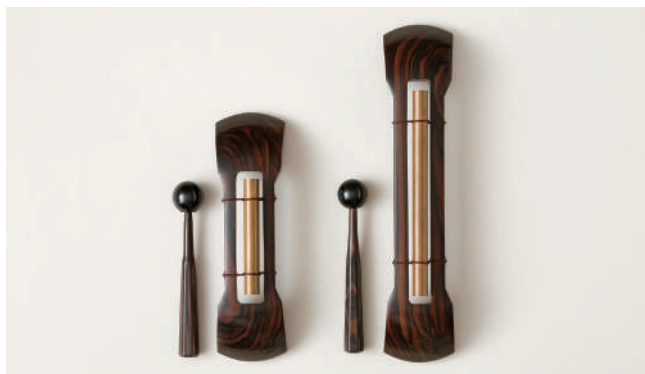
天神チャイム

Tokyo Shamisen (Three-Stringed Musical Instrument)

**A gentle, traditional tone that soothes the soul
— so pleasant, you'll want to ring it again and again.**

This healing chime by Kikuoka produces delicate, soothing tones that evoke a deep sense of calm and relaxation. Ideal for meditation, yoga, or simply when you wish to unwind, its gentle sound helps release tension from the body and resonates deeply with the heart. The design draws direct inspiration from the shamisen, the traditional Japanese three-stringed instrument, incorporating a motif based on the Tenjin (headstock) joined together. The body is crafted from ebony—a wood often referred to as the “diamond of woods” for its density and lustre. The chime's striker is ingeniously repurposed from shamisen tuning pegs, reflecting the artisan's deep commitment to sound and craftsmanship.

Available in three varieties, each with its unique tone.



Product Details

Tenjin Chime S

200 × 58 × Height 50 mm /
Ebony, Bronze, Nylon strings

Tenjin Chime M

235 × 58 × Height 50 mm /
Ebony, Bronze, Nylon strings

Tenjin Chime L

270 × 58 × height 50 mm /
ebony, bronze, nylon strings

Production company details

Sangenshi Kikuoka

三絃司きくおか



Established as an independent workshop in 1987, Sangenshi Kikuoka is one of the few specialised shamisen studios in Japan that directly imports its own materials.

Rather than producing ready-made stock, the studio's skilled artisans carefully craft each shamisen by hand, tailoring every instrument to the customer's budget and intended use.

Address: 1-7-2 Higashi-Yotsugi, Katsushika-ku, Tokyo, 124-0014, Japan

Tel: +81 (0)3 3696 5501

Website: https://kikuoka123.com/?page_id=406&lang=en

Email: cbe06097@nifty.com

Scented Clothes Brush

かおる洋服ブラシ

Tokyo Teue Brush (Handmade Brushes)

A clothes brush with a scent to refresh your mind as well as your clothes

By applying Miyakawa's traditional hole-drilling method and hand-planting technique to secure the bristles—both of which make optimal use of pig bristles—we have created a lightweight, slim brush with a thickness of just 20 mm. This scented clothes brush is highly effective at lifting dirt from deep within fibres and smoothing fabric surfaces. By inserting the included paper filter made of Japanese paper (washi) infused with your favourite aroma or perfume, each brush stroke releases a pleasant fragrance, providing a refreshing and enjoyable grooming experience.



Product Details

Scented Clothes Brush
Handled, 250 × 80 mm, approx.
100 g / Walnut, White Pig Hair,
Japanese Washi Paper, Leather

Scented Clothes Brush
Standing, 110 × 90 mm, approx.
75 g / Walnut, White Pig Hair,
Japanese Washi Paper

Production company details

Miyakawa Hake-Brush Manufacturing Co.,Ltd.

有限会社宮川刷毛ブラシ製作所

Founded in 1921 by Shojiro Miyakawa in the Asakusa district of Tokyo, Miyakawa Hake-Brush Manufacturing Co. is a long-standing maker of traditional brushes and hake (flat brushes).

The second-generation craftsman, Akio Miyakawa, was recognised as a “Contemporary Master Craftsman” for his outstanding skill and contribution to the field. Now, more than 100 years since its founding, the techniques and spirit of the previous generations live on in the work of third-generation craftswoman Kumiko Miyakawa.

Address: 2-10-14 Motoasakusa, Taito-ku, Tokyo, 111-0041, Japan
Tel: +81 (0)3 3844 5025
Website: <https://edo-hake-brush.com/>
Email: edo-hake@extra.ocn.ne.jp



ORIIRO

屏風バッグ 折彩(おりいろ)



Edo Hyogu (Scroll Mountings)

A Reversible Folding-screen bag crafted by Edo screen makers

This unique mini-bag is crafted using traditional techniques originally developed for making Japanese folding screens (byōbu), combining washi paper and wood in an innovative, contemporary design. Versatile and stylish, it complements both traditional Japanese and Western attire, making it a perfect accessory for special occasions such as parties, as well as for everyday use. The bag's construction uses the same joinery method that allows folding screens to bend and unfold — connecting wooden panels with strong, flexible washi. This structure not only makes the bag reversible, but also remarkably durable. The outer layer is finished with thick washi, typically used in fusuma (sliding doors), while the inner lining is made from fiber-reinforced washi for added strength and functionality.



Product Details

ORIIRO

Gold/Red, approx. 25 × 7 × 18.3 cm
/ Walnut, Japanese paper, cowhide

ORIIRO

White/Pink, Silver/Light Blue,
approx. 25 × 7 × Height 18.3 cm /
Beech, Japanese paper, cowhide

Production company details

Kamiyama Hyougu Inc.

株式会社 神山表具



Founded over 80 years ago as a kyōjiya (a specialist in paper-based interior fittings), Kamiyama Hyogu is one of the few remaining studios preserving Edo-period hyōgu (traditional Japanese mounting techniques for items like fusuma sliding doors and byōbu folding screens).

As demand for traditional furnishings like fusuma and byōbu began to decline around the 1960s, the studio adapted by applying their skills to working with washi wallpaper. Today, they continue to restore and repair fusuma, screens, and wallpaper using time-honoured methods—making them an invaluable presence in the world of traditional Japanese interiors.

Address: 2-6-13 Nishi-Rokugo, Ota-ku, Tokyo, 144-0056, Japan

Tel: +81 (0)3 3731 1375

Website: <https://www.kamiyama-hyogu.com/>

Email: kamiyamahyogu@gmail.com

Tokyo Youkasa Nijikasumi -Asakasumi / Yuukasumi-

東京洋傘 虹霞～朝霞・夕霞～



Tokyo Youkasa (umbrella)

A sun-and-rain umbrella meticulously woven with the changing hues of a rainbow

This elegant sun-and-rain umbrella is a new challenge by Ichihara, the makers of the men's umbrella line RAMUDA. Crafted using a specialised weaving technique, the original fabric captures the ever-changing colours of the sky — from dawn to dusk — shifting hues in response to light, like a rainbow caught in motion. Faithful to their philosophy of “building the umbrella to suit the fabric,” this design-first approach places the material at the heart of the process. The result is a thoughtfully designed umbrella that fits seamlessly into everyday life — including an umbrella bag that allows it to be stored without folding.



Product Details

Nijikasumi -Asakasumi

/ Yuukasumi- Youkasa (Umbrella)

Each with Pin Stripes and Bold Stripes
/ Diameter (when open) 104 cm, Total Length (folded) 41 cm, Total Length (extended) Main Ribs 58 cm / Fabric: 100% Polyester (Waterproof, Water-Repellent, UV-Protected), Main Ribs: Glass Fibre, Central Pole: Aluminium, Handle: Natural Wood

Nijikasumi - 4-Way Shoulder Bag

Asakasumi, Yuukasumi / Each with Pin Stripes and Bold Stripes / 37 × 30cm / Fabric: 100% Polyester (Waterproof, Water-Repellent, UV-Protected), Grosgrain Ribbon: 100% Polyester

Production company details

Ichihara Co.,Ltd.

株式会社市原



With a history of nearly 80 years, Ichihara is a long-established maker of umbrellas and leather goods, driven by a desire to preserve the world-class quality achieved by Japanese artisans.

Their umbrellas embody a fusion of European umbrella-making techniques and Japanese craftsmanship, carrying forward the spirit and skill of Tokyo Western-style umbrellas into the present.

Address: 2-17-9 Nihonbashi-Kayabacho, Chuo-ku, Tokyo, 103-0025, Japan

Tel: +81 (0)3 3669 2061

Website: <https://ichihara-1946.com/>

Email: k-ouchi@ichihara-1946.com

monpluie robe

着せ替え洋傘 モンプリュイ・ローブ



Tokyo Youkasa (umbrella)

An umbrella for life, ready for any weather

This interchangeable umbrella is perfectly suited to the increasingly unpredictable weather of recent years — from post-rainy-season heatwaves to sudden torrential downpours. It comes as a set: a high-performance polyester canopy for rain, and a cotton-linen canopy for sun, allowing you to switch between the two as needed. The handle and ferrule are crafted from solid natural wood, offering a warm touch that develops a unique character over time. A soft, comfortable strap adds ease of handling. Meticulously crafted by skilled artisans, this sustainable long umbrella is built to last — simply replace the canopy to keep using it for years to come.



Product Details

monpluie robe

Length 76cm × Diameter 95cm

Sun umbrella:

53% cotton, 47% linen

Rain umbrella:

100% polyester, Handle and tip:
Black cherry

Production company details

Mont Blanc Co.,Ltd.

株式会社モンブラン



Mont Blanc's Western-style umbrellas are known for their vibrant, art-like designs. Founded in 1960 as a specialist umbrella manufacturer, the company continues to uphold the traditional Japanese weaving technique known as hogushi-ori—a complex method that creates soft, blurred patterns.

From the umbrella's frame to fabric cutting, sewing, and final finishing, every step of the production process is carried out by skilled artisans.

Address: 2-19-1 Taihei, Sumida-ku, Tokyo, 130-0012, Japan

Tel: +81 (0)3 6751 9748

Website: <https://www.montblanc-y.co.jp/>

Email: kimie@montblanc-y.co.jp

ROKKAKU

ROKKAKU



Tokyo Teue Brush (Handmade Brushes)

A hand-crafted authentic shoe brush for the shoe enthusiast

This hand-planted, authentic shoe brush blends traditional craftsmanship with a modern design twist. The grip features a distinctive hexagonal shape, allowing it to rest comfortably in your palm for better control and ease during brushing. Crafted with natural bristles and carefully selected materials suited to each purpose, these hand-planted brushes provide exceptional bristle density, long-lasting durability, and optimal performance — making your polishing routine more efficient and satisfying.

Available in four variations: "Dusting," "Polishing," "Finishing," and "Dusting & Polishing."



Product Details

ROKKAKU Dust Brush & Polishing Set

Red (Brush: 70 × 61 × Height 85mm / Hinoki wood, horsehair, shoe cream: 40ml)

ROKKAKU Dust Brush

Orange (Brush: 70 × 66 × Height 85 mm / Hinoki wood, horsehair)

ROKKAKU Polishing Set

Yellow-Green (Brush: 70 × 61 × Height 85 mm / Hinoki, white pig hair, shoe cream: 40 ml)

ROKKAKU Finishing Set

Blue (Brush: 70 × 56 × Height 85 mm / Hinoki wood, goat hair)

Production company details

Uno Hake Brush Manufacturing Co.,Ltd.

株式会社宇野刷毛ブラシ製作所

Since 1917, Uno Hake Brush Manufacturing has applied techniques honed through generations of hake brush craftsmanship to produce and sell both traditional brushes and modern innovations. Their Tokyo hand-planted brushes have also earned acclaim overseas.

While staying true to the roots of traditional brush and hake making, the company continues to develop innovative products—incorporating playful design elements and adapting to contemporary needs.

Address: 3-1-5 Mukojima, Sumida-ku, Tokyo, 131-0033, Japan

Tel: +81 (0)3 3622 9078

Website: <https://unobrush.jp/en/>

Email: unobrush@extra.ocn.ne.jp



Komon jewelry

Komon jewelry

Other



Passing down traditional craftsmanship with a playful spirit.

These leather accessories and scarves feature the "Iware Komon" pattern — traditional Edo-period patterns, each carrying a meaning or wish, selected from the traditional Komon (small motif) designs passed down through generations at Tomita Dye Craft. These small motifs once carried various auspicious messages, stories, and symbolism and were worn not only for beauty but for their deeper significance. For example, the motif with a crane and the turtle is based on a proverb "a crane lives a thousand years, a turtle ten thousand" and symbolised longevity. In the past, people wore such patterns as subtle expressions of style and personal sentiment. Captivated by the refined beauty and intricacy of Komon patterns, we also offer jewelry designed to coordinate seamlessly with our silk scarves.



Product Details

Komon scarf

Orange, 90 × width 5 cm
100% silk

Komon scarf ring

Diameter 1.8 × Height 2 cm
Leather

Production company details

Tomita Dye Craft Co.,Ltd.

株式会社富田染工芸



Founded in 1914, Tomita Dye Craft has been preserving Edo's aesthetic sensibilities and traditional techniques for over 110 years. At the heart of their work lies the Tomita Collection—an archive of over 100,000 Edo-period Ise-katagami (intricately carved paper stencils used for dyeing).

With this rich legacy, they continue to bring Edo-style komon dyeing into modern life, creating designs that blend the wit and spirit of the Edo era with contemporary sensibilities.

Address: 3-6-14 Nishi-Waseda, Shinjuku-ku, Tokyo, 169-0051, Japan

Tel: +81 (0)3 3987 0701

Website: <https://fr.sarakichi.tokyo>

Email: info@fr.sarakichi.tokyo

Chisana Kiriko

小さなキリコ

Edo Kiriko (Cut Glassware)

Little Kiriko accessories reborn from scrap glass, adorned with light

These upcycled accessories are crafted from glass scraps left over from the glass-cutting process. Made with crystal glass—the clearest type used in Edo Kiriko (Traditional cut glass from Tokyo)—they feature an overlay of coloured glass and are adorned with traditional patterns that are believed to bring good luck, commonly found in Edo Kiriko pieces. Despite their small size, they radiate the authentic beauty of Edo Kiriko, shimmering when touched by light. The balance of size, lightness, and brilliance has been meticulously honed through repeated prototyping, and carving such intricate patterns into small glass surfaces is a demanding process, requiring the refined skill of a master craftsman. All resulting in these pieces of exceptional quality.



Product Details

Chisana Kiriko Necklace

Necklace Top: 34 × 10 × 4mm

Chain: approx. 40cm

Necklace Top: Crystal

Chain: Brass, Copper

Chisana Kiriko Earrings

32 × 10 mm

Production company details

Kadowaki Glass

門脇硝子加工所



Kadowaki Glass is home to artisans who carry on the century-old legacy of Edo Kiriko — traditional Japanese cut glass — while continually refining their craft to create pieces that transcend conventional boundaries. Their innovative approach and exceptional skill have garnered widespread recognition, with frequent features in the media.

Address: 3-4-23 Kitasuna, Koto-ku, Tokyo, 136-0073, Japan

Tel: +81 (0)3 3648 8676

Website: <https://www.kadowakiglass.com/>

Email: kadowakiglass@chime.ocn.ne.jp

Hand Dyeing Tunic

モノトーン更紗チェニックシャツ



Edo Sarasa (Printed Silk Calico)

A tunic shirt that brings out your individuality with a touch of Edo flair

By drawing on the sensibility and craftsmanship of traditional Japanese artisans, this piece offers a distinctive design that blends effortlessly into modern lifestyles. Instead of the multicoloured dyeing techniques typically associated with Edo Sarasa, it adopts muted monochrome tones, creating a refined and contemporary aesthetic.

Cut in an extended tunic-length silhouette, the shirt can be worn as a casual dress—easy to style and comfortable to wear.



Product Details

Hand Dyeing Tunic

White, Black / M, L / 100% Cotton

Production company details

Textile Dyeing Ochiai

一般社団法人染の里おちあい



For over a century since its founding in 1920, Ochiai has specialized in dyeing Edo Sarasa, renowned for its rich, intricate, and multicolored patterns. Much like the Edo-period artisans who brought their own creativity and ideas to each design, the studio is dedicated to carrying forward not only the visual culture of Edo, but also the spirit, craftsmanship, and passion that defined its makers.

Address: 2-3-6 Kami-Ochiai, Shinjuku-ku, Tokyo, 161-0034, Japan
Tel: +81 (0)3 3368 8133
Website: <https://www.ochiai-san.com/>
Email: info@ochiai-san.com

Tokyo Honzome HAORI

東京本染HAORI



Tokyo Honzome Yukata (Indigo-Dyed Summer Kimono)

Wrap yourself in Tokyo's downtown spirit and step out in summer style

This playful summer piece is made from menro, a high-quality cotton fabric traditionally used for yukata. It is dyed using chūsen, a traditional Japanese technique in which artisans pour dye directly into the fabric by hand. Designed especially for international visitors and younger generations less familiar with yukata, this haori-style jacket brings a fresh and fun twist to summer fashion. The patterns, brought to life through the artisans' expert touch, include "Yatagarasu" — a mythical three-legged crow — and "Bon Odori Dance Scene." Both motifs are tied to Tateishi, a downtown neighborhood in Tokyo's Katsushika Ward and home to Tokyo Wazarashi, the workshop behind this piece. These designs evoke the vibrant energy and nostalgic charm of Tokyo's shitamachi (old-town) neighborhoods.



Product Details

Tokyo Honzome HAORI
Bon Odori, Yatagarasu,
Free Size / 100% Cotton

Production company details

Tokyo Wazarashi Co.Ltd

東京和晒株式会社



Founded in 1889, Tokyo Wazarashi has upheld Edo culture for over 130 years through its traditional hand-dyed tenugui (traditional cotton towels) and yukata (casual summer kimono). Remaining committed to traditional cotton fabrics and wazarashi—a traditional Japanese method of washing and bleaching cotton—the studio continues to engage customers with a wide array of textile products. These include bleached cotton cloth, yukata, hanten jackets, yarn-dyed fabrics, and solid-dyed materials—adapting to the times while preserving techniques refined over generations.

Address: 4-14-9 Tateishi, Katsushika-ku, Tokyo, 124-0012, Japan
Tel: +81 (0)3 3693 3333
Website: <https://tenugui.co.jp/>
Email: front@tenugui.co.jp

KIMONO ART YUZEN STOLE



KIMONO ART YUZEN STOLE

Tokyo Yuzen (Kimono)

The KIMONO ART YUZEN STOLE — A wearable art piece

The KIMONO ART YUZEN STOLE is the product of a fusion of techniques, including the traditional Yuzen dyeing method, which has been used to dye fabrics for Kimonos. The “SAKURA” design features warm-toned colours with cherry blossoms, while the “LEAVES” design highlights cool-toned foliage that reflects the changing seasons. Each stole is adorned with auspicious patterns and traditional Japanese motifs, making it a versatile piece that can be worn as either a scarf or a shawl. Individually hand-painted and dyed, every piece has its expression. Pieces with the same colour and pattern still retain slight variations, making each one a truly unique work of art.



Product Details

KIMONO ART YUZEN STOLE

SAKURA, LEAVES / 180 × 58 cm
100% Silk

Production company details

Dyeing Studio Takatori

染工房たかとり



Using the Itome Yuzen technique — in which resist paste (itome nori) is carefully applied to fabric as if sketching with a pencil on paper — the artisans at Studio Takatori create one-of-a-kind kimonos, obis, framed artworks, and accessories.

Each piece is hand-dyed using the same meticulous processes used in kimono-making. Auspicious motifs are often incorporated into the designs, interwoven with the seasonal beauty of the Japanese landscape.

Address: 3-541-3 Hinatawada, Ome-shi, Tokyo, 198-0046, Japan

Tel: +81 (0)428 21 4265

Website: <https://somekouboutakatori.jimdofree.com>

Email: tp_yuzen@yahoo.co.jp

hikariful

hikariful



Tama Ori (Fabrics)

Weaving the shimmering surface of water through the Tama-ori technique

This scarf and shawl are woven using the traditional Omeshi-ori technique — a branch of the Tama-ori textile weaving tradition — and evolved from striped kimono fabric designs passed down through generations. Thousands of vibrant, fine silk threads are meticulously combined to create the delicate texture of Yoryu (silk gauze crepe). The fabric is woven on vintage looms that place minimal stress on the silk, and each piece is individually finished to preserve its softness and refined texture. The colour palette evokes the lush greenery of trees, the gentle light of dawn, and shimmering clusters of stars — capturing the brilliance of Tama's ever-changing natural scenery, all expressed through the interplay of shimmering silk, like reflections on the surface of water.



Product Details

Long Scarf

Blue, Pink, Grey, Turquoise
Blue, Navy, Orange, 37 × 170 cm
100% Silk

*Also available: Shawl (Pink,
Blue, 67 × 200 cm / 100% silk)

Production company details

Sawai Textile

有限会社澤井織物工場



With a history spanning 120 years, Sawai Textile is the only long-established workshop in Hachioji still dedicated to producing Tama-ori—a traditional weaving technique unique to the Tama region of Tokyo. In addition to crafting high-quality fabric for kimono, the studio also creates exclusive woven textiles for contemporary use, including stoles for major fashion brands and fabric for costumes used in the Tokyo Olympics. These are textiles that only Sawai Textile can produce.

Address: 1181 Takatsukimachi, Hachioji-shi, Tokyo, 192-0002, Japan

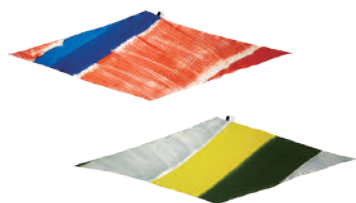
Tel: +81 (0)42 691 1032

Website: <https://tokyoteshigoto.tokyo/en/studio/sawai-textile-factory/>

Email: sawai.orimono@gmail.com

Scarf “Jantle” dyed Tokyo-Hikizome

東京引染スカーフ『Jantle』



Other

A Tokyo Hikizome Scarf that elevates a simple white T-shirt

The concept behind this product is “A Scarf That Elevates a Simple White Tee.” Using hikizome, a traditional dyeing technique from Tokyo, skilled artisans boldly apply vibrant colors to create a striking, graphic design. The result is a stylish scarf that stands out beautifully against the simplicity of a white T-shirt. Each scarf is hand-dyed from a full roll of fabric and then individually cut, making every piece a one-of-a-kind creation with a unique pattern entirely your own. It allows you to wear a touch of traditional craftsmanship and contemporary spirit — effortlessly and boldly.



Product Details

Jantle Scarf

Orange, Blue, Yellow, Black,
43 × 143 cm / 100% Silk

Production company details

Fujiya Dyeing Studio

ふじや染工房



Founded in 1952, Fujiya Dyeing Studio set up its workshop in Shinjuku, Tokyo, at a time when dyeing artisans gathered in the area to take advantage of the abundant water from rivers such as the Kanda and Myōshōji. For over 70 years, the studio has approached its craft with sincerity and passion, preserving traditional techniques while producing hand-dyed textiles with care and precision.

Address: 3-28-13 Takadanobaba, Shinjuku-ku, Tokyo, 169-0075, Japan
Tel: +81 (0)3 3368 8559
Website: <https://sites.google.com/view/fujiya-somekoubou/home>
Email: nt1116fujiya@gmail.com

Note

[illegible]

Note

[illegible]



TOKYO Teshigoto brings the artistry of Japanese craftsmanship to Paris, with a presence at Maison et Objet and a pop-up at Maison Wa.

From 4th to 13th September, 2025

In addition to the exhibition at Maison et Objet, TOKYO Teshigoto will also participate in Paris Design Week, presenting a curated selection of artisanal works at Maison Wa, a Japanese cultural hub in the heart of Paris.

Through these initiatives, the project aims to share the refined techniques and timeless beauty of Tokyo's traditional crafts with a wider international audience.

Pop-up shop information

Maison Wa sainte-anne

Address

12 Rue Sainte-Anne, 75001 Paris

Opening hours

Tue – Sat 11:00 – 19:00

Sun, Mon Closed

Tel +33 1 42 60 66 52

Website <https://maisonwa.com/>





TOKYO
Teshigoto



TOKYO Teshigoto
Brand Site



Instagram

TOKYO Teshigoto

